

# Traffic Plan 03/25/19

Detour EB traffic on AP Newcomb Rd.




Detour WB traffic on Stony Brook Rd.

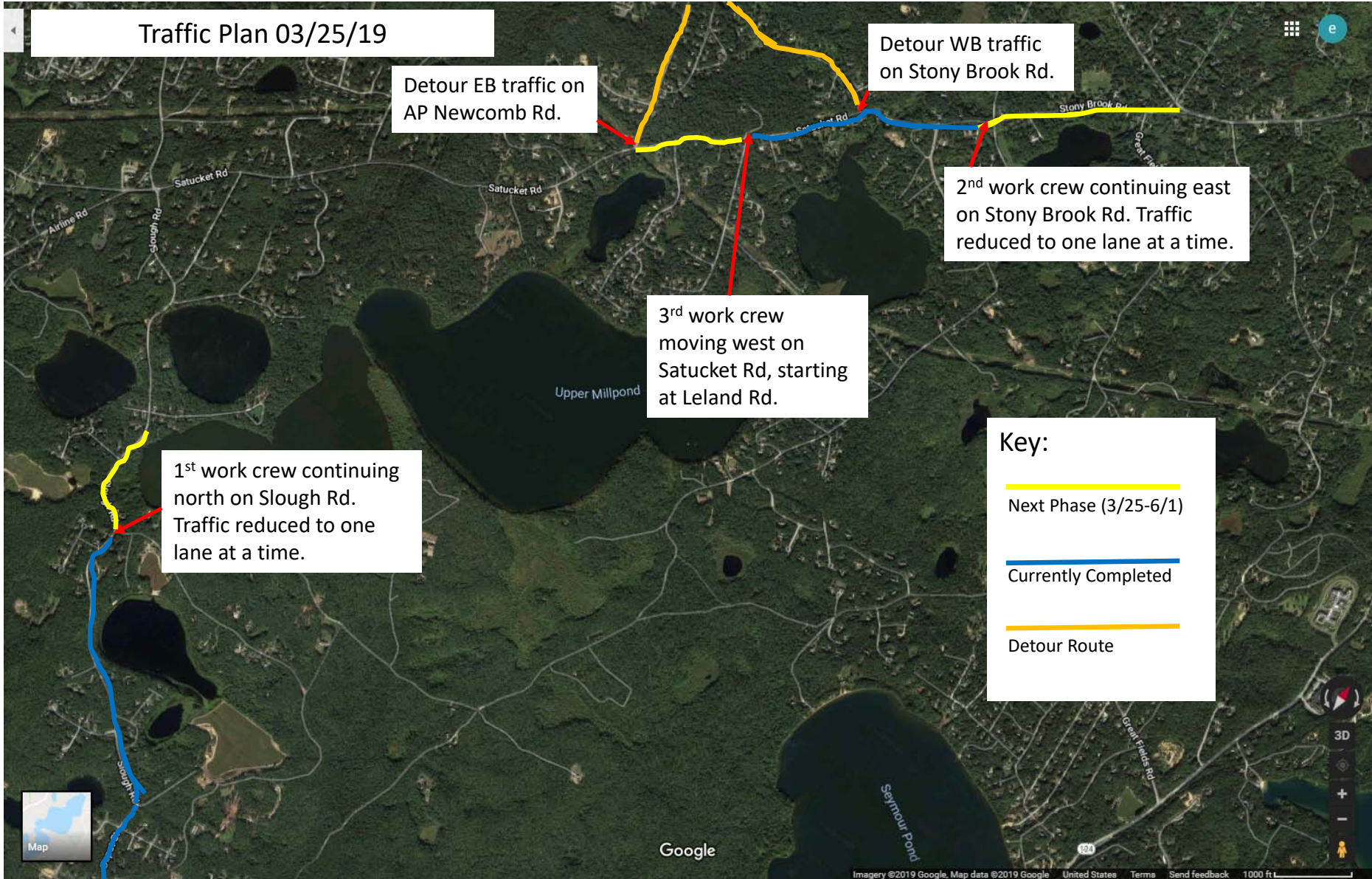
2<sup>nd</sup> work crew continuing east on Stony Brook Rd. Traffic reduced to one lane at a time.

3<sup>rd</sup> work crew moving west on Satucket Rd, starting at Leland Rd.

1<sup>st</sup> work crew continuing north on Slough Rd. Traffic reduced to one lane at a time.

**Key:**

-  Next Phase (3/25-6/1)
-  Currently Completed
-  Detour Route



Google

Traffic Plan 04/01/19 (est.)

Detour EB traffic on AP Newcomb Rd.

Detour EB traffic north on Paines Creek Rd.

Detour WB traffic west on Rt. 6A

Detour WB traffic on Stony Brook Rd.

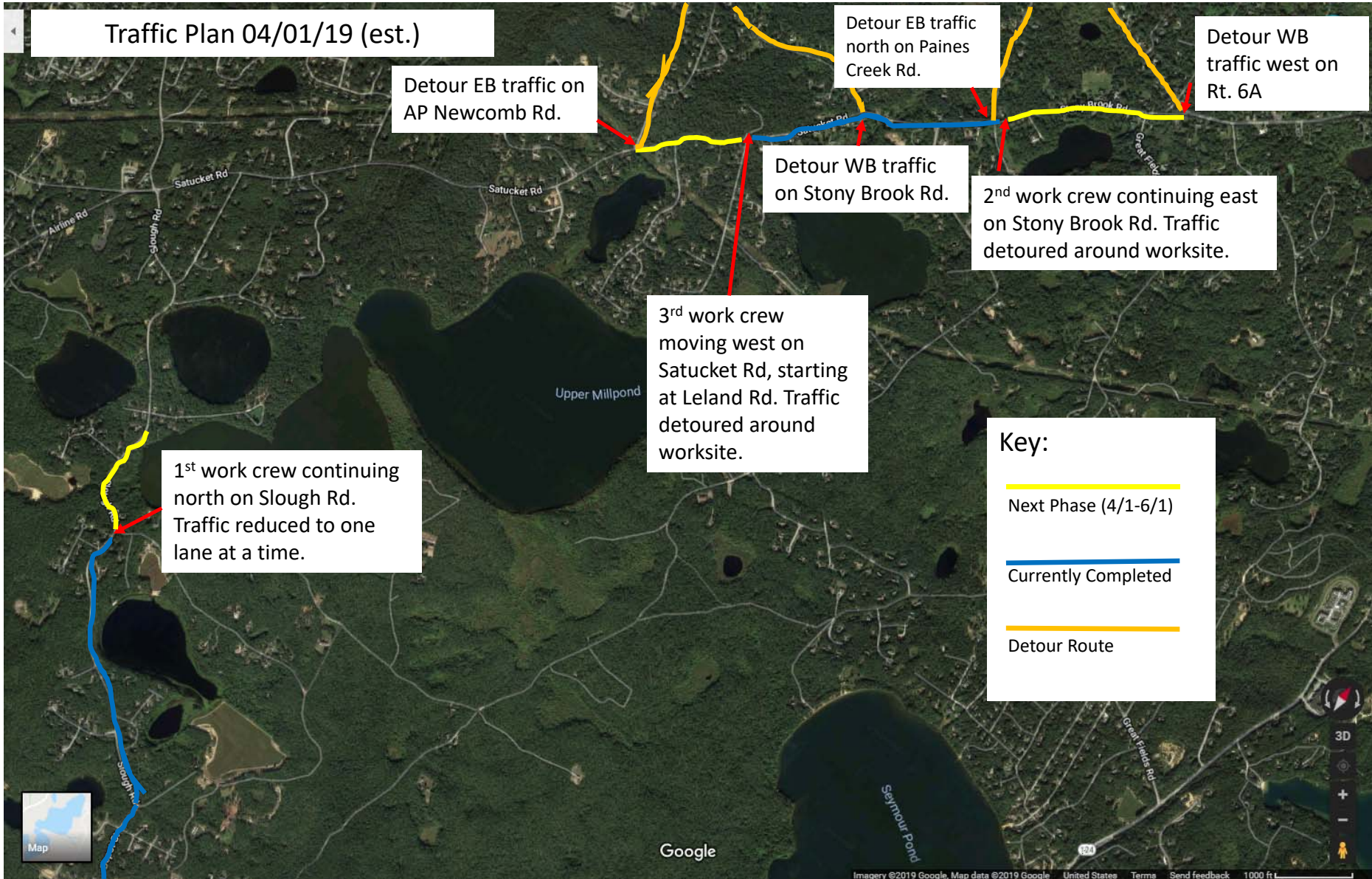
2<sup>nd</sup> work crew continuing east on Stony Brook Rd. Traffic detoured around worksite.

3<sup>rd</sup> work crew moving west on Satucket Rd, starting at Leland Rd. Traffic detoured around worksite.

1<sup>st</sup> work crew continuing north on Slough Rd. Traffic reduced to one lane at a time.

Key:

- Next Phase (4/1-6/1)
- Currently Completed
- Detour Route



Google