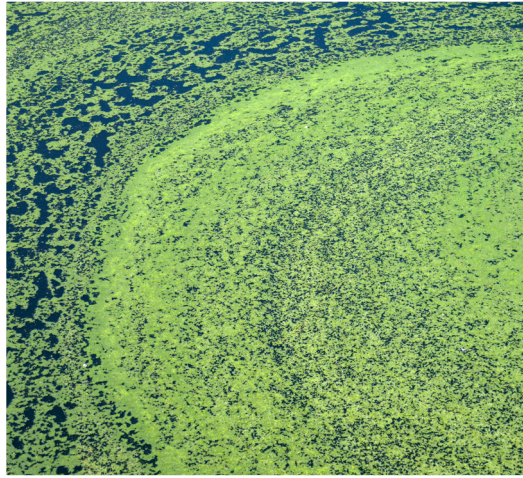


**When lawn  
clippings make it  
into waterbodies,  
the grass can be  
greener on the  
other side.....**





When grass clippings get into storm drains they can eventually make their way to ponds, streams, rivers, and the ocean



The nitrogen in grass acts like a fertilizer and causes algae blooms, which are toxic to humans and wildlife



In some cases, algae blooms can lead to beach and shellfish bed closures

# GRASS CLIPPINGS ARE A SIGNIFICANT SOURCE OF STORMWATER POLLUTION

**But YOU can be part of the solution!**

It's a **GOOD** idea!

- Mowing less frequently
- Leaving them on your lawn (free fertilizer!)
- Composting your clippings
- Bagging & disposing properly

It's a **BAD** idea!

- Blowing your clippings into the street





# TOGETHER WE CAN HELP REDUCE STORMWATER POLLUTION IN BREWSTER

For more information about  
the Town of Brewster's Stormwater Program, visit  
<https://www.brewster-ma.gov/public-works-department>